

For all heating systems

HEIFI-TOP

Backflush Filter with Venting System

Silt and gases in the heating circuit lead to malfunctions, reduced output and corrosion. JUDO HEIFI-TOP heating filter filter out even fine suspended materials and remove harmful air bubbles. And all that without using any chemicals.

The advantages

- ◆ Cleaning and fast venting with only 1 device
- ◆ Improved heat transport
- ◆ Greater functional reliability
- ◆ Reduced risk of corrosion
- ◆ No filter screen – no follow-up costs
- ◆ Thermally insulated
- ◆ Made in Germany



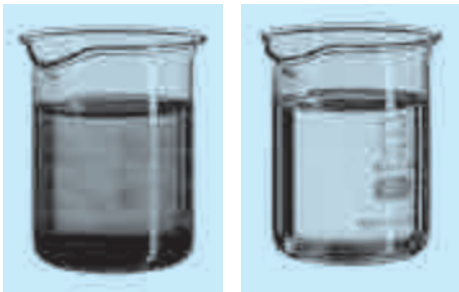
HEIFI-FÜL

Automatic filling station

The advantages

- ◆ Standard filling and topping up to DIN/EN 1717
- ◆ Always the right operating pressure
- ◆ Permanent installation
- ◆ Safe connection with the pipe system through the BA pipe disconnecter
- ◆ Reduced oxygen intake
- ◆ Made in Germany

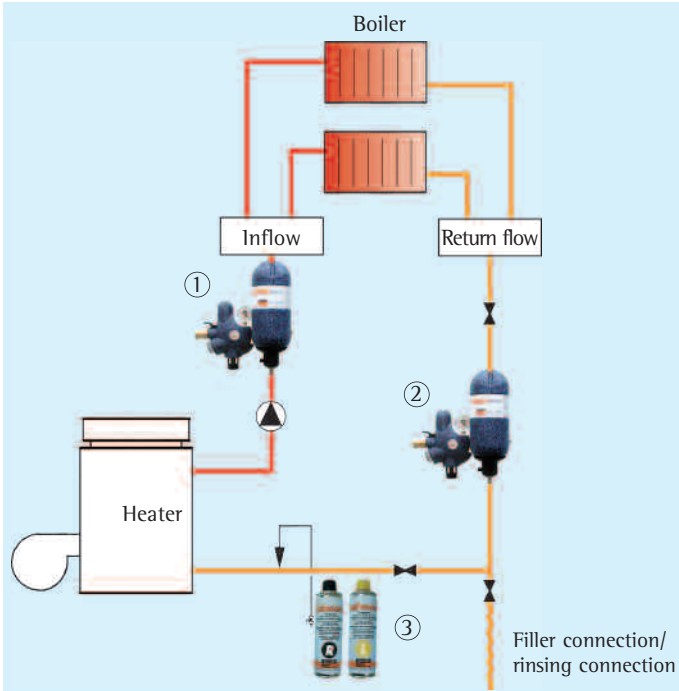




Before:
Dirty heating water due to corrosion particles.

After:
Heating water as it should be.

Installation diagram



Two possible installations:

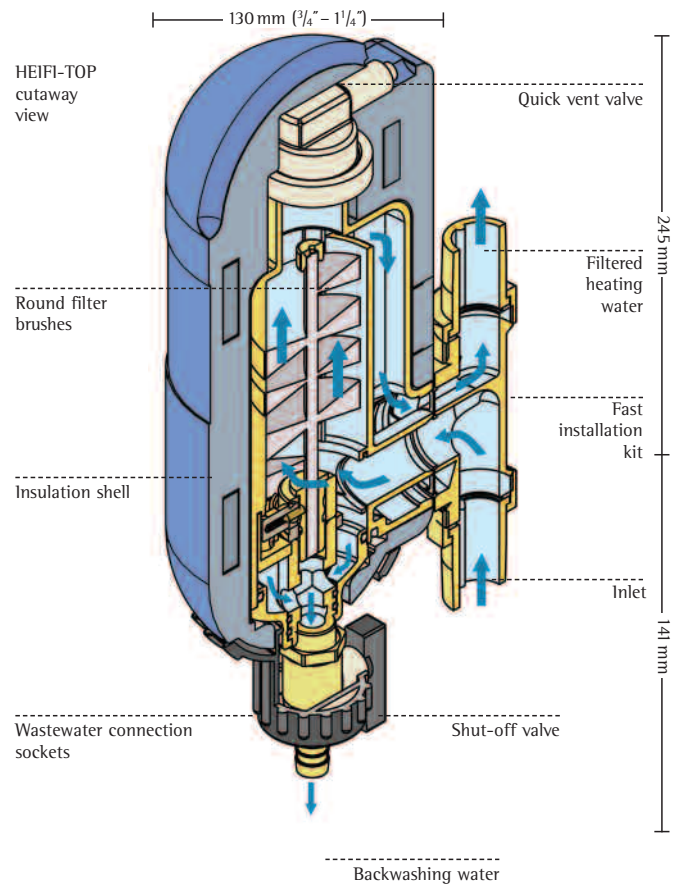
- 1 Preferred protection through gas removal
- 2 Preferred protection against silt
- 3 Optional: Metering pump for dosing solution

Quick-mounting

The patented JUDO QUICKSET-E (included in the scope of supply), facilitates the installation of the unit to trained personnel.



We carry JUDO-products in stock



HEIFI-TOP technical specifications

Model	JHF-T*	JHF-T	JHF-T	JHF-T**	JHF-T**
Pipe connection inch	3/4"	1"	1 1/4"	1 1/2"	2"
Flow rate m ³ /h	2	3	4	6	8
Max. temp. inlet water °C	90	90	90	90	90
Max. operating pressure bar	10	10	10	10	10
Installed length mm	180	195	230	252	280
Order No.	8060030	8060031	8060032	8060033	8060034

* JHF-T 1" with 3/4" Quickset-E ** 2 JHF-T 1" or 1 1/4" with parallel fitted rotary flange

HEIFI-FÜL (JHF-F) technical specifications

Pipe connection inch	3/4"
Max. operating pressure °C	65
Max. heating water temp °C	90
Installed length mm	180
Order No.	8060040

HEIFI-KOM

The fast installation kit. Consisting of HEIFI-TOP, HEIFI-FÜL and cross flange.

HEIFI-KOM (JHF-K) technical specifications

Heating circuit* inch	1"	1 1/4"
Nominal flow rate HEIFI-TOP m ³ /h	3	4
Order No.	8060051	8060052

*Drinking water system 3/4"



QUALITÄTS-MANAGEMENT
Wir sind zertifiziert
Regelmäßige freiwillige
Überwachung nach ISO 9001:2008



**Qualität
made
in Germany**



JUDO Wasseraufbereitung GmbH
Postfach 380 · D-71351 Winnenden
Tel. +49 (0)1805 / 6 92-001*
Fax +49 (0)1805 / 6 92-110*
E-Mail: export@judo.eu · www.judo.eu

*14 Cent/Min. aus dem dt. Festnetz, Mobilfunk abweichend