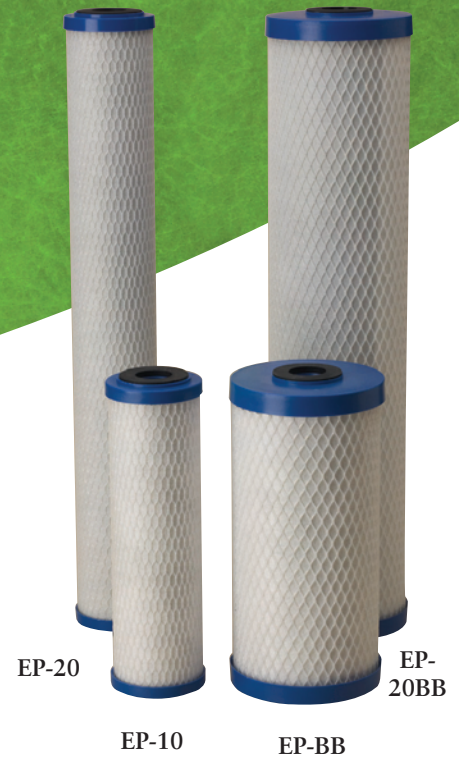


EP SERIES CARBON-BRIQUETTE CARTRIDGES

- Nominal 5-micron rating*
- High dirt-holding capacity maximizes utilization of the carbon block*
- Highly effective bad taste & odor and chlorine taste & odor reduction*



EP Series carbon briquette cartridges are manufactured using a patented process that yields a cartridge with a nominal 5-micron filtration rating, high dirt-holding capacity. A high porosity design helps prevent the cartridge from plugging before its adsorption capacity is exhausted, maximizing the utilization of the carbon while maintaining low pressure drop.

These cartridges are protected by Endurawrap[®], a uniquely formulated polyolefin bilaminate pre-filter, designed to significantly increase the useful life of the cartridge by trapping sediment that typically plugs carbon block cartridges.

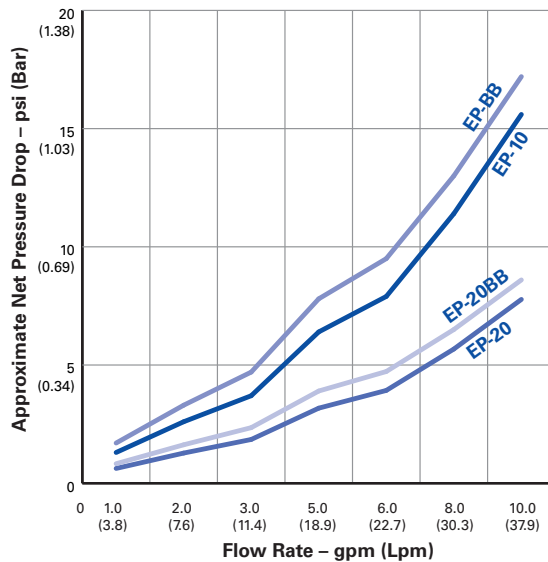
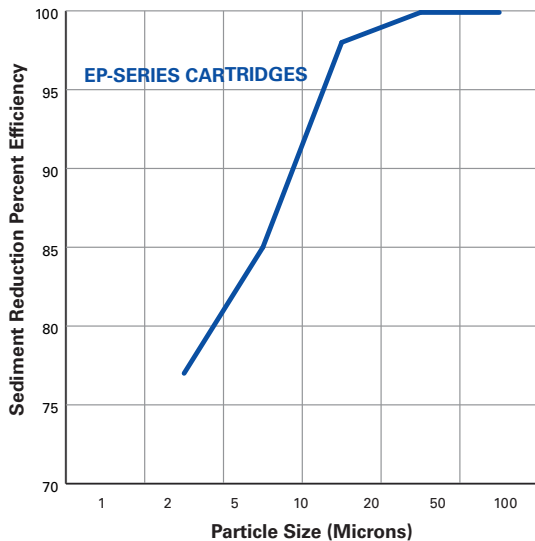
EP Series cartridges are manufactured entirely from FDA-compliant materials making them an ideal choice for a wide range of residential, food service, commercial and industrial applications.

* Based on manufacturer's internal testing.



EP SERIES

Carbon-Briquette Cartridges



Cartridge Specifications and Performance Data

Model	Maximum Dimensions	Micron Rating* (nominal)	Initial ΔP (psi) @ Flow Rate (gpm)	Chlorine Taste & Odor Reduction @ Flow Rate
EP-10	2 ⁷ / ₈ " x 9 ³ / ₄ " (73 mm x 248 mm)	5	3.4 psi @ 1 gpm (0.23 bar @ 3.8 Lpm)	>6000 gallons @ 1 gpm (22,700L @ 3.8 Lpm)
EP-20	2 ⁷ / ₈ " x 20" (73 mm x 508 mm)	5	3.4 psi @ 2 gpm (0.23 bar @ 7.6 Lpm)	>12,000 gallons @ 2 gpm (45,400L @ 7.6 Lpm)
EP-30		5		
EP-40		5		
EP-BB	4 ⁵ / ₈ " x 9 ³ / ₄ " (118 mm x 248 mm)	5	4.3 psi @ 2 gpm (0.30 bar @ 7.6 Lpm)	>22,000 gallons @ 2 gpm (83,300L @ 7.6 Lpm)
EP20-BB	4 ⁵ / ₈ " x 20" (118 mm x 508 mm)	5	5.5 psi @ 5 gpm (0.38 bar @ 19 Lpm)	>40,000 gallons @ 4 gpm (151,400L @ 15.1 Lpm)

* Based on manufacturer's internal testing

Materials of Construction

Filter Media	Bonded PAC
End Caps	Polypropylene
Inner/Outer Wraps	Polyolefin
Netting	Polyethylene
Gaskets	Buna-N
Temperature Rating	40–180°F (4.4–82.2°C)



This EP-10, EP-20, EP-BB and EP-20BB are Tested and Certified by NSF International to NSF/ANSI Standard 42 for material requirements only.

WARNING: Do not use with water that is microbiologically unsafe or of unknown quality without adequate disinfection before or after the system.

NOTE: The EP cartridges will contain a very small amount of carbon fines (very fine black powder) and a new cartridge after installation should be flushed with sufficient water to remove the fines from your water system before using the water.

NOTE: Micron ratings based on 85% or greater removal of given particle size. Data obtained from actual particle counts using AC Fine Test Dust and Latex spheres.

NOTE: Estimated capacity using 2ppm free available chlorine (FAC) at continuous flow with greater than 90% reduction.

U.S. Patent No. 5,976,432 & 5,823,668



502 Indiana Avenue • P.O. Box 1047 • Sheboygan, Wisconsin 53082-1047
 Customer Service: 800.645.0267 • Fax: 888.203.7361 • supportspecialist@pentekfiltration.com
 International: 920.457.9435 • Fax: 920.457.2417 • international@pentekfiltration.com
 www.pentekfiltration.com